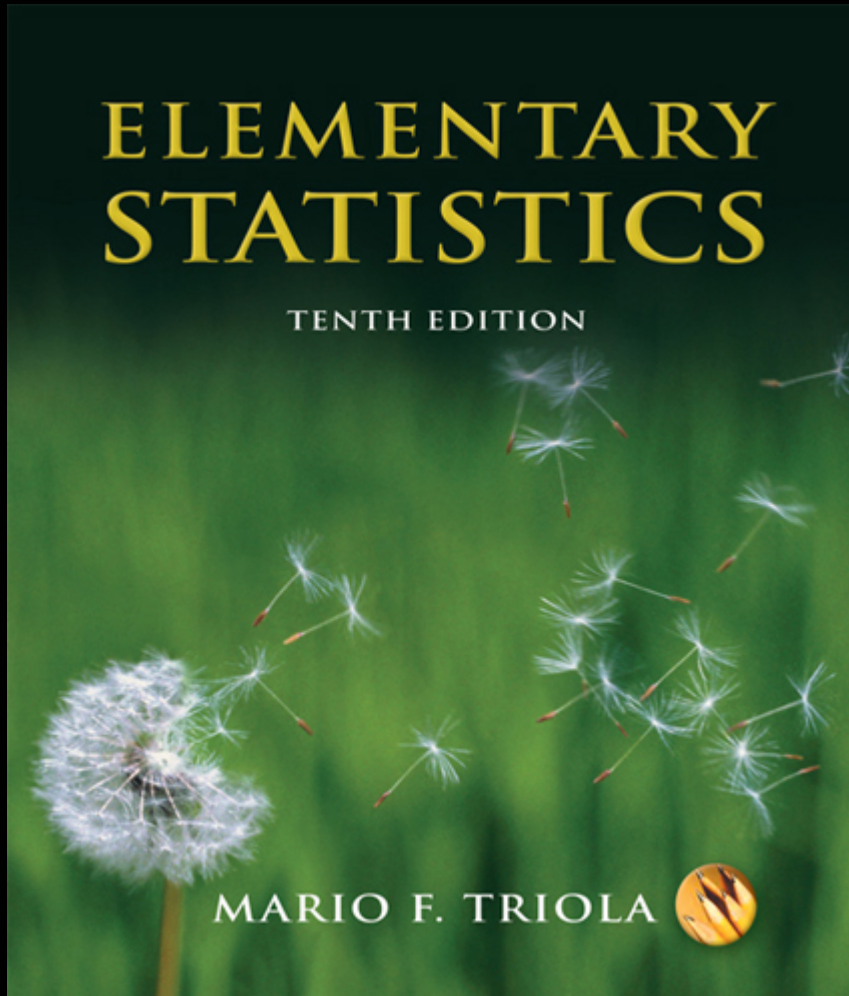


# Lecture Slides



## *Elementary Statistics* Tenth Edition

and the Triola Statistics Series

by Mario F. Triola

# Chapter 8

## Hypothesis Testing

**8-1 Overview**

**8-2 Basics of Hypothesis Testing**

**8-3 Testing a Claim about a Proportion**

**8-4 Testing a Claim About a Mean:  $\sigma$  Known**

**8-5 Testing a Claim About a Mean:  $\sigma$  Not Known**

**8-6 Testing a Claim About a Standard Deviation or Variance**

# Section 8-1

## Overview



Created by Erin Hodgess, Houston, Texas  
Revised to accompany 10<sup>th</sup> Edition, Tom Wegleitner, Centreville, VA



# Definitions

In statistics, a **hypothesis** is a claim or statement about a property of a population.

A **hypothesis test** (or **test of significance**) is a standard procedure for testing a claim about a property of a population.

# Rare Event Rule for Inferential Statistics

**If, under a given assumption, the probability of a particular observed event is exceptionally small, we conclude that the assumption is probably not correct.**

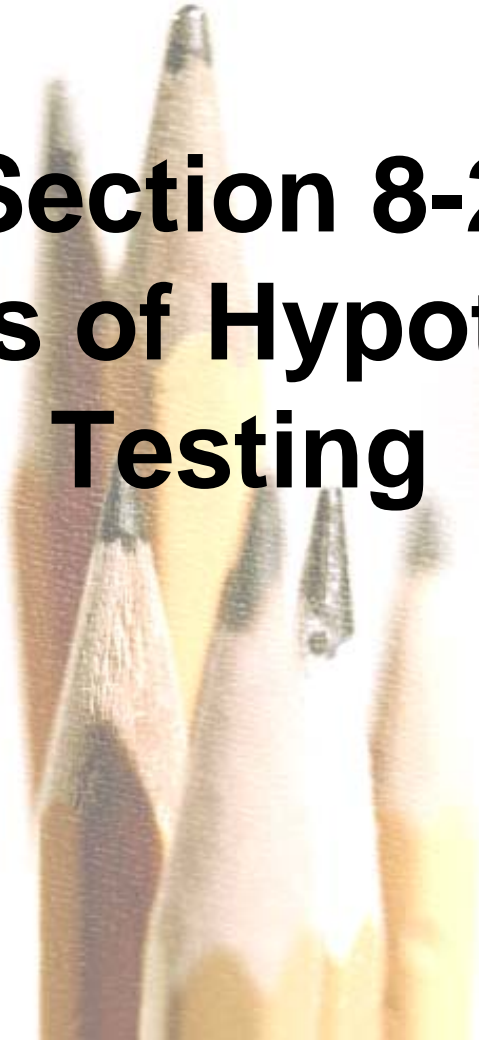
**Example:** ProCare Industries, Ltd., once provided a product called “Gender Choice,” which, according to advertising claims, allowed couples to “increase your chances of having a boy up to 85%, a girl up to 80%.” Gender Choice was available in blue packages for couples wanting a baby boy and (you guessed it) pink packages for couples wanting a baby girl. Suppose we conduct an experiment with 100 couples who want to have baby girls, and they all follow the Gender Choice “easy-to-use in-home system” described in the pink package. For the purpose of testing the claim of an increased likelihood for girls, we will assume that Gender Choice has no effect. Using common sense and no formal statistical methods, what should we conclude about the assumption of no effect from Gender Choice if 100 couples using Gender Choice have 100 babies consisting of  
a) 52 girls?; b) 97 girls?

## **Example:** ProCare Industries, Ltd.: Part a)

**a) We normally expect around 50 girls in 100 births. The result of 52 girls is close to 50, so we should not conclude that the Gender Choice product is effective. If the 100 couples used no special method of gender selection, the result of 52 girls could easily occur by chance. The assumption of no effect from Gender Choice appears to be correct. There isn't sufficient evidence to say that Gender Choice is effective.**

## **Example:** ProCare Industries, Ltd.: Part b)

**b) The result of 97 girls in 100 births is extremely unlikely to occur by chance. We could explain the occurrence of 97 girls in one of two ways: Either an **extremely** rare event has occurred by chance, or Gender Choice is effective. The extremely low probability of getting 97 girls is strong evidence against the assumption that Gender Choice has no effect. It does appear to be effective.**



# **Section 8-2**

# **Basics of Hypothesis**

# **Testing**

Created by Erin Hodgess, Houston, Texas  
Revised to accompany 10<sup>th</sup> Edition, Tom Wegleitner, Centreville, VA



# Key Concept

**This section presents individual components of a hypothesis test, and the following sections use those components in comprehensive procedures.**

**The role of the following should be understood:**

- ❖ **null hypothesis**
- ❖ **alternative hypothesis**
- ❖ **test statistic**
- ❖ **critical region**
- ❖ **significance level**
- ❖ **critical value**
- ❖ ***P*-value**
- ❖ **Type I and II error**

# Section 8-2 Objectives

- ❖ **Given a claim, identify the null hypothesis and the alternative hypothesis, and express them both in symbolic form.**
- ❖ **Given a claim and sample data, calculate the value of the test statistic.**
- ❖ **Given a significance level, identify the critical value(s).**
- ❖ **Given a value of the test statistic, identify the *P*-value.**
- ❖ **State the conclusion of a hypothesis test in simple, non-technical terms.**

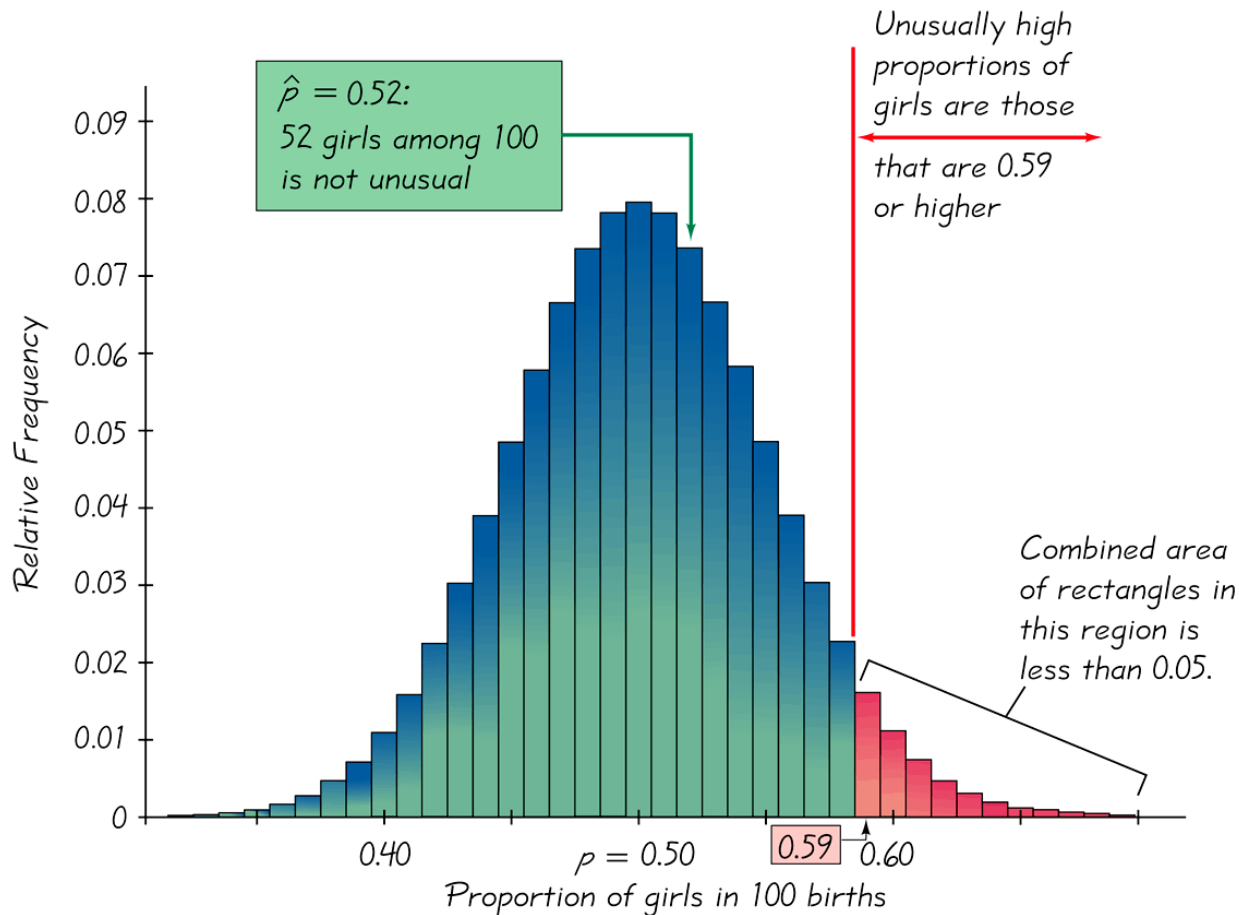
**Example:** Let's again refer to the Gender Choice product that was once distributed by ProCare Industries. ProCare Industries claimed that couples using the pink packages of Gender Choice would have girls at a rate that is greater than 50% or 0.5. Let's again consider an experiment whereby 100 couples use Gender Choice in an attempt to have a baby girl; let's assume that the 100 babies include exactly 52 girls, and let's formalize some of the analysis.

Under normal circumstances the proportion of girls is 0.5, so a claim that Gender Choice is effective can be expressed as  $p > 0.5$ .

Using a normal distribution as an approximation to the binomial distribution, we find  $P(52 \text{ or more girls in } 100 \text{ births}) = 0.3821$ .

**Example:** Let's again refer to the Gender Choice product that was once distributed by ProCare Industries. ProCare Industries claimed that couples using the pink packages of Gender Choice would have girls at a rate that is greater than 50% or 0.5. Let's again consider an experiment whereby 100 couples use Gender Choice in an attempt to have a baby girl; let's assume that the 100 babies include exactly 52 girls, and let's formalize some of the analysis.

Figure 8-1, following, shows that with a probability of 0.5, the outcome of 52 girls in 100 births is not unusual.



**Figure 8-1**

**We do not reject random chance as a reasonable explanation. We conclude that the proportion of girls born to couples using Gender Choice is not significantly greater than the number that we would expect by random chance.**

# Observations

- ❖ **Claim:** For couples using Gender Choice, the proportion of girls is  $p > 0.5$ .
- ❖ **Working assumption:** The proportion of girls is  $p = 0.5$  (with no effect from Gender Choice).
- ❖ The sample resulted in 52 girls among 100 births, so the sample proportion is  $\hat{p} = 52/100 = 0.52$ .
- ❖ Assuming that  $p = 0.5$ , we use a normal distribution as an approximation to the binomial distribution to find that  $P$  (at least 52 girls in 100 births) = 0.3821.
- ❖ There are two possible explanations for the result of 52 girls in 100 births: Either a random chance event (with probability 0.3821) has occurred, or the proportion of girls born to couples using Gender Choice is greater than 0.5.
- ❖ There isn't sufficient evidence to support Gender Choice's claim.

# Components of a Formal Hypothesis Test

# Null Hypothesis:

## $H_0$

- ❖ The **null hypothesis** (denoted by  $H_0$ ) is a statement that the value of a population parameter (such as proportion, mean, or standard deviation) is **equal to** some claimed value.
- ❖ We test the null hypothesis directly.
- ❖ Either reject  $H_0$  or fail to reject  $H_0$ .

# Alternative Hypothesis:

## $H_1$

- ❖ The **alternative hypothesis** (denoted by  $H_1$  or  $H_a$  or  $H_A$ ) is the statement that the parameter has a value that somehow differs from the null hypothesis.
- ❖ The symbolic form of the alternative hypothesis must use one of these symbols:  $\neq$ ,  $<$ ,  $>$ .

# Note about Forming Your Own Claims (Hypotheses)

If you are conducting a study and want to use a hypothesis test to **support** your claim, the claim must be worded so that it becomes the alternative hypothesis.

# Note about Identifying $H_0$ and $H_1$

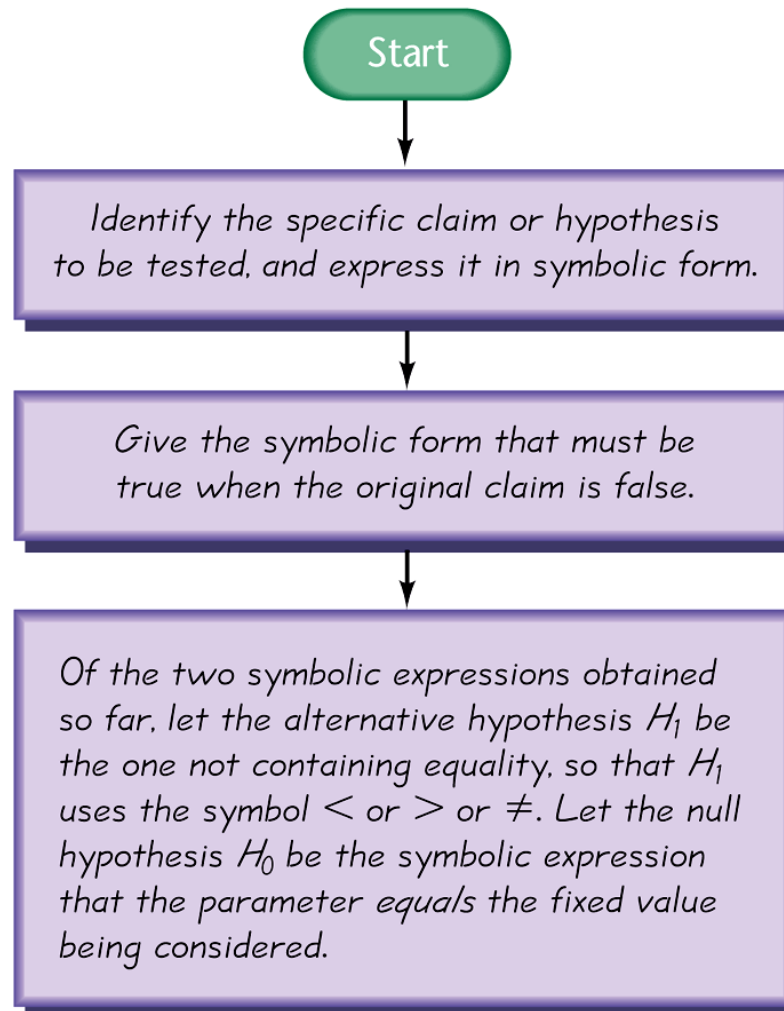


Figure 8-2

**Example:** Identify the Null and Alternative Hypothesis. Refer to Figure 8-2 and use the given claims to express the corresponding null and alternative hypotheses in symbolic form.

- a) The proportion of drivers who admit to running red lights is greater than 0.5.
- b) The mean height of professional basketball players is at most 7 ft.
- c) The standard deviation of IQ scores of actors is equal to 15.

**Example:** Identify the Null and Alternative Hypothesis. Refer to Figure 8-2 and use the given claims to express the corresponding null and alternative hypotheses in symbolic form.

a) The proportion of drivers who admit to running red lights is greater than 0.5. In Step 1 of Figure 8-2, we express the given claim as  $p > 0.5$ . In Step 2, we see that if  $p > 0.5$  is false, then  $p \leq 0.5$  must be true. In Step 3, we see that the expression  $p > 0.5$  does not contain equality, so we let the alternative hypothesis  $H_1$  be  $p > 0.5$ , and we let  $H_0$  be  $p = 0.5$ .

**Example:** Identify the Null and Alternative Hypothesis. Refer to Figure 8-2 and use the given claims to express the corresponding null and alternative hypotheses in symbolic form.

b) The mean height of professional basketball players is at most 7 ft. In Step 1 of Figure 8-2, we express “a mean of at most 7 ft” in symbols as  $\mu \leq 7$ . In Step 2, we see that if  $\mu \leq 7$  is false, then  $\mu > 7$  must be true. In Step 3, we see that the expression  $\mu > 7$  does not contain equality, so we let the alternative hypothesis  $H_1$  be  $\mu > 0.5$ , and we let  $H_0$  be  $\mu = 7$ .

**Example:** Identify the Null and Alternative Hypothesis. Refer to Figure 8-2 and use the given claims to express the corresponding null and alternative hypotheses in symbolic form.

c) The standard deviation of IQ scores of actors is equal to 15. In Step 1 of Figure 8-2, we express the given claim as  $\sigma = 15$ . In Step 2, we see that if  $\sigma = 15$  is false, then  $\sigma \neq 15$  must be true. In Step 3, we let the alternative hypothesis  $H_1$  be  $\sigma \neq 15$ , and we let  $H_0$  be  $\sigma = 15$ .

# Test Statistic

The **test statistic** is a value used in making a decision about the null hypothesis, and is found by converting the sample statistic to a score with the assumption that the null hypothesis is true.

# Test Statistic - Formulas

$$z = \frac{\hat{p} - p}{\sqrt{\frac{pq}{n}}}$$

Test statistic for proportions

$$z = \frac{\bar{X} - \mu_{\bar{X}}}{\frac{\sigma}{\sqrt{n}}}$$

Test statistic for mean

$$\chi^2 = \frac{(n - 1)s^2}{\sigma^2}$$

Test statistic for standard deviation

**Example:** A survey of  $n = 880$  randomly selected adult drivers showed that 56% (or  $p = 0.56$ ) of those respondents admitted to running red lights. Find the value of the test statistic for the claim that the majority of all adult drivers admit to running red lights. (In Section 8-3 we will see that there are assumptions that must be verified. For this example, assume that the required assumptions are satisfied and focus on finding the indicated test statistic.)

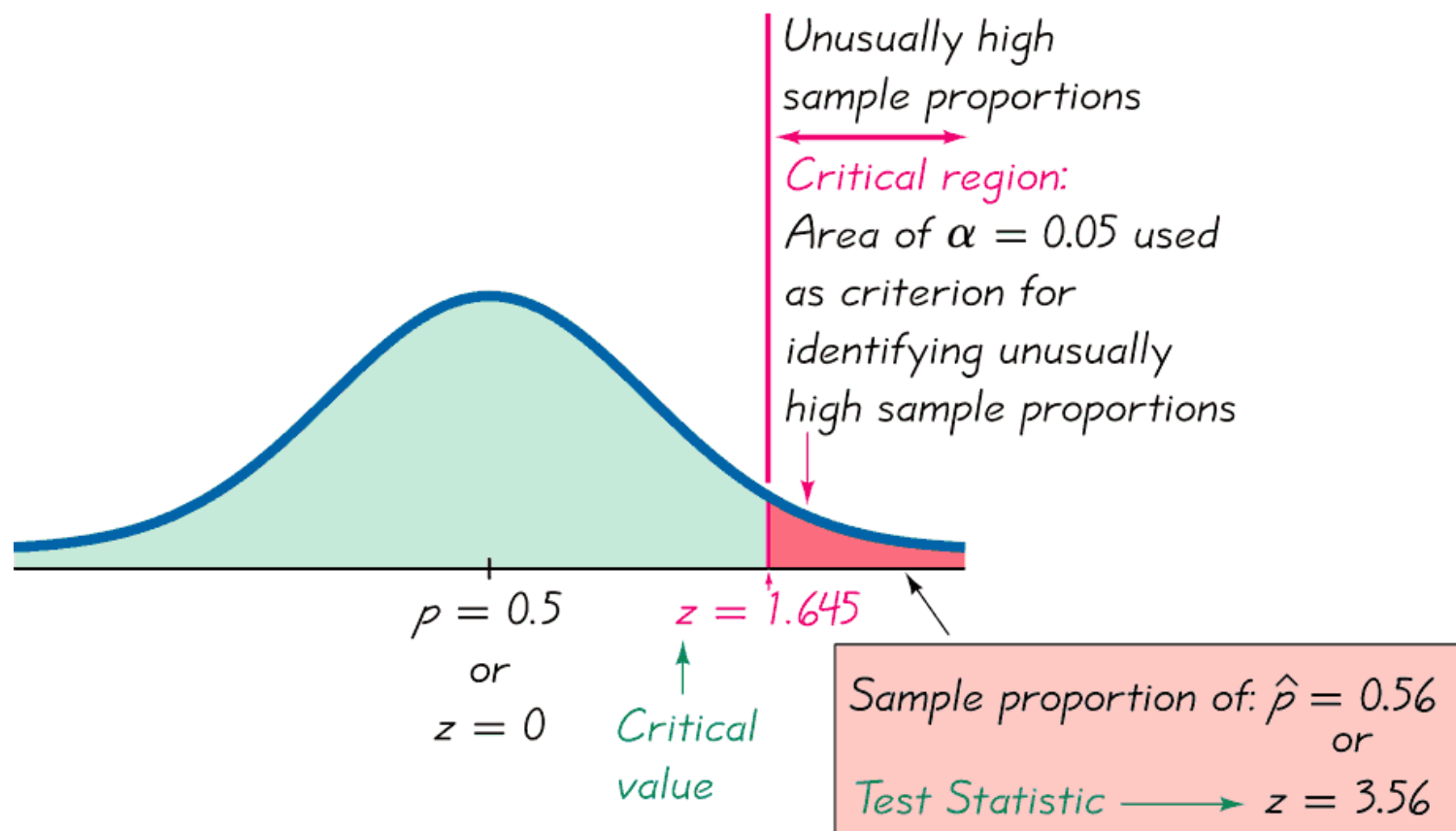
**Solution:** The preceding example showed that the given claim results in the following null and alternative hypotheses:  $H_0: p = 0.5$  and  $H_1: p > 0.5$ . Because we work under the assumption that the null hypothesis is true with  $p = 0.5$ , we get the following test statistic:

$$z = \frac{\hat{p} - p}{\sqrt{\frac{pq}{n}}} = \frac{0.56 - 0.5}{\sqrt{\frac{(0.5)(0.5)}{880}}} = 3.56$$

**Interpretation:** We know from previous chapters that a z score of 3.56 is exceptionally large. It appears that in addition to being “more than half,” the sample result of 56% is **significantly** more than 50%.

**See figure following.**

# Critical Region, Critical Value, Test Statistic



Proportion of adult drivers admitting  
that they run red lights

# Critical Region

The **critical region** (or **rejection region**) is the set of all values of the test statistic that cause us to reject the null hypothesis. For example, see the red-shaded region in the previous figure.

# Significance Level

The **significance level** (denoted by  $\alpha$ ) is the probability that the test statistic will fall in the critical region when the null hypothesis is actually true. This is the same  $\alpha$  introduced in Section 7-2. Common choices for  $\alpha$  are 0.05, 0.01, and 0.10.

# Critical Value

A **critical value** is any value that separates the critical region (where we reject the null hypothesis) from the values of the test statistic that do not lead to rejection of the null hypothesis. The critical values depend on the nature of the null hypothesis, the sampling distribution that applies, and the significance level  $\alpha$ . See the previous figure where the critical value of  $z = 1.645$  corresponds to a significance level of  $\alpha = 0.05$ .

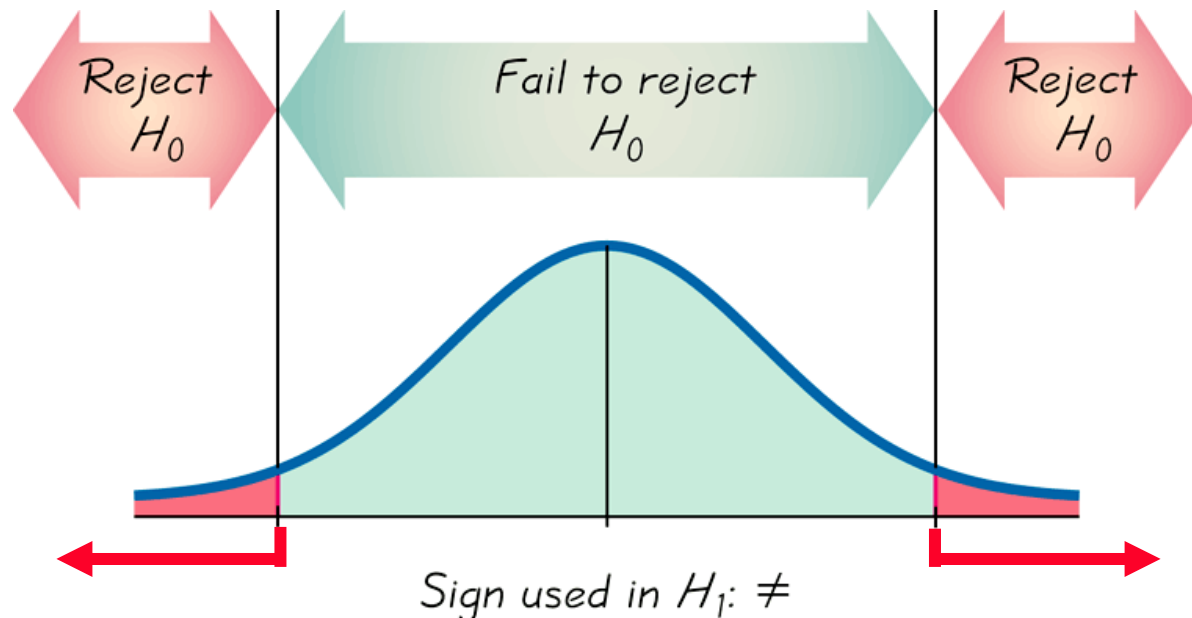
# Two-tailed, Right-tailed, Left-tailed Tests

The **tails** in a distribution are the extreme regions bounded by critical values.

# Two-tailed Test

$H_0: =$   $\alpha$  is divided equally between  
the two tails of the critical  
region  
 $H_1: \neq$

Means less than or greater than

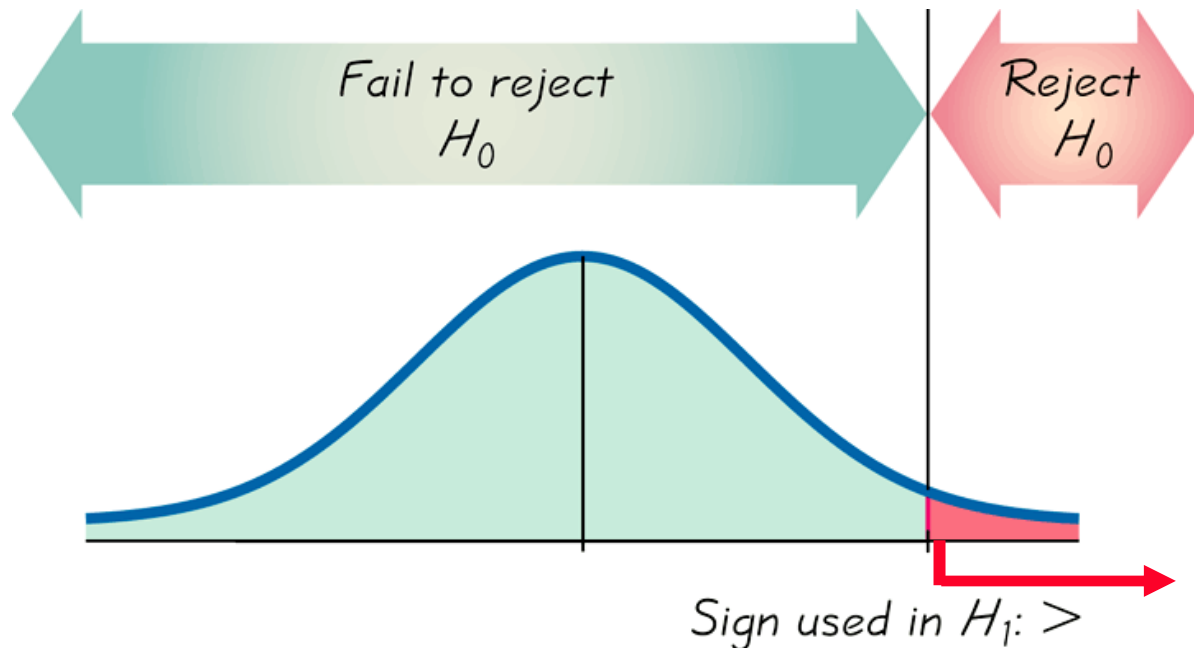


# Right-tailed Test

$$H_0: =$$

$$H_1: >$$

 **Points Right**

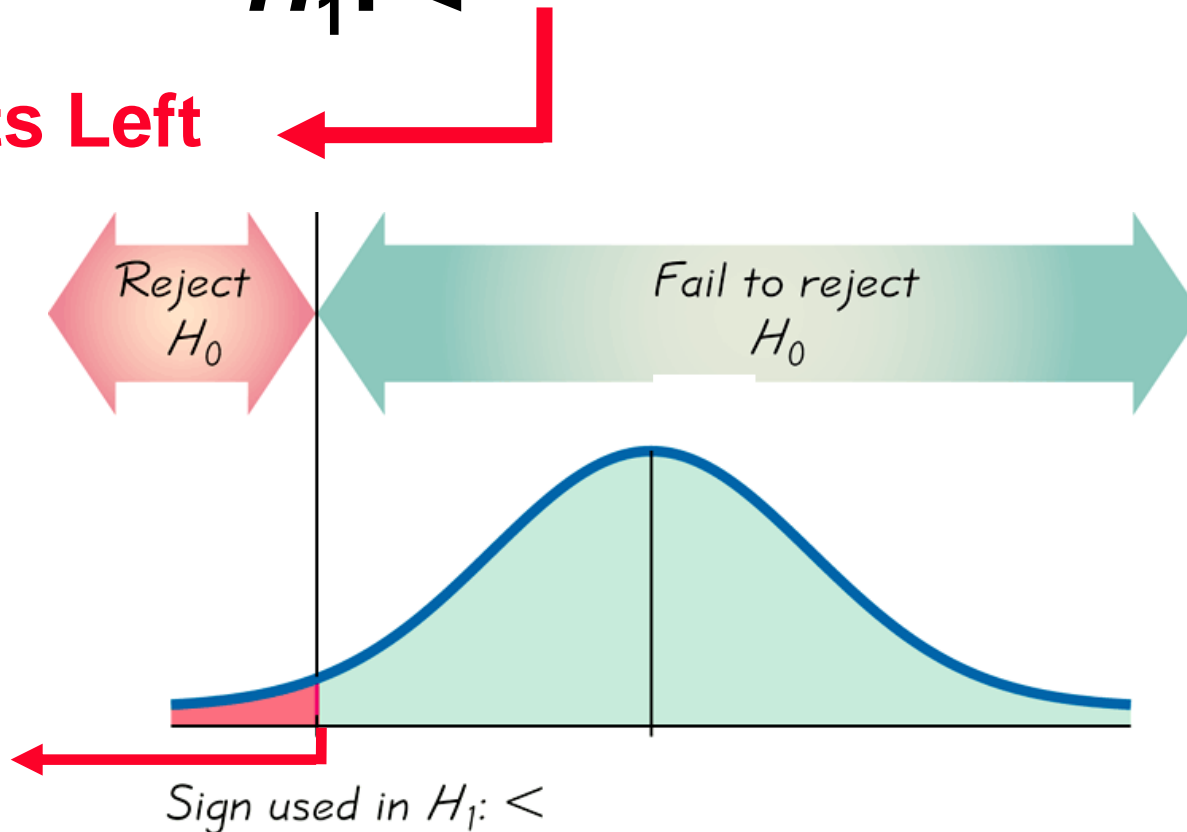


# Left-tailed Test

$$H_0: =$$

$$H_1: <$$

Points Left



# *P*-Value

The *P*-value (or *p*-value or probability value) is the probability of getting a value of the test statistic that is at least as extreme as the one representing the sample data, assuming that the null hypothesis is true. The null hypothesis is rejected if the *P*-value is very small, such as 0.05 or less.

# Conclusions in Hypothesis Testing

**We always test the null hypothesis.  
The initial conclusion will always be  
one of the following:**

- 1. Reject the null hypothesis.**
- 2. Fail to reject the null hypothesis.**

# Decision Criterion

**Traditional method:**

**Reject  $H_0$**  if the test statistic falls within the critical region.

**Fail to reject  $H_0$**  if the test statistic does not fall within the critical region.

# Decision Criterion - cont

***P*-value method:**

**Reject  $H_0$**  if the *P*-value  $\leq \alpha$  (where  $\alpha$  is the significance level, such as 0.05).

**Fail to reject  $H_0$**  if the *P*-value  $> \alpha$ .

# Decision Criterion - cont

**Another option:**

**Instead of using a significance level such as 0.05, simply identify the *P*-value and leave the decision to the reader.**

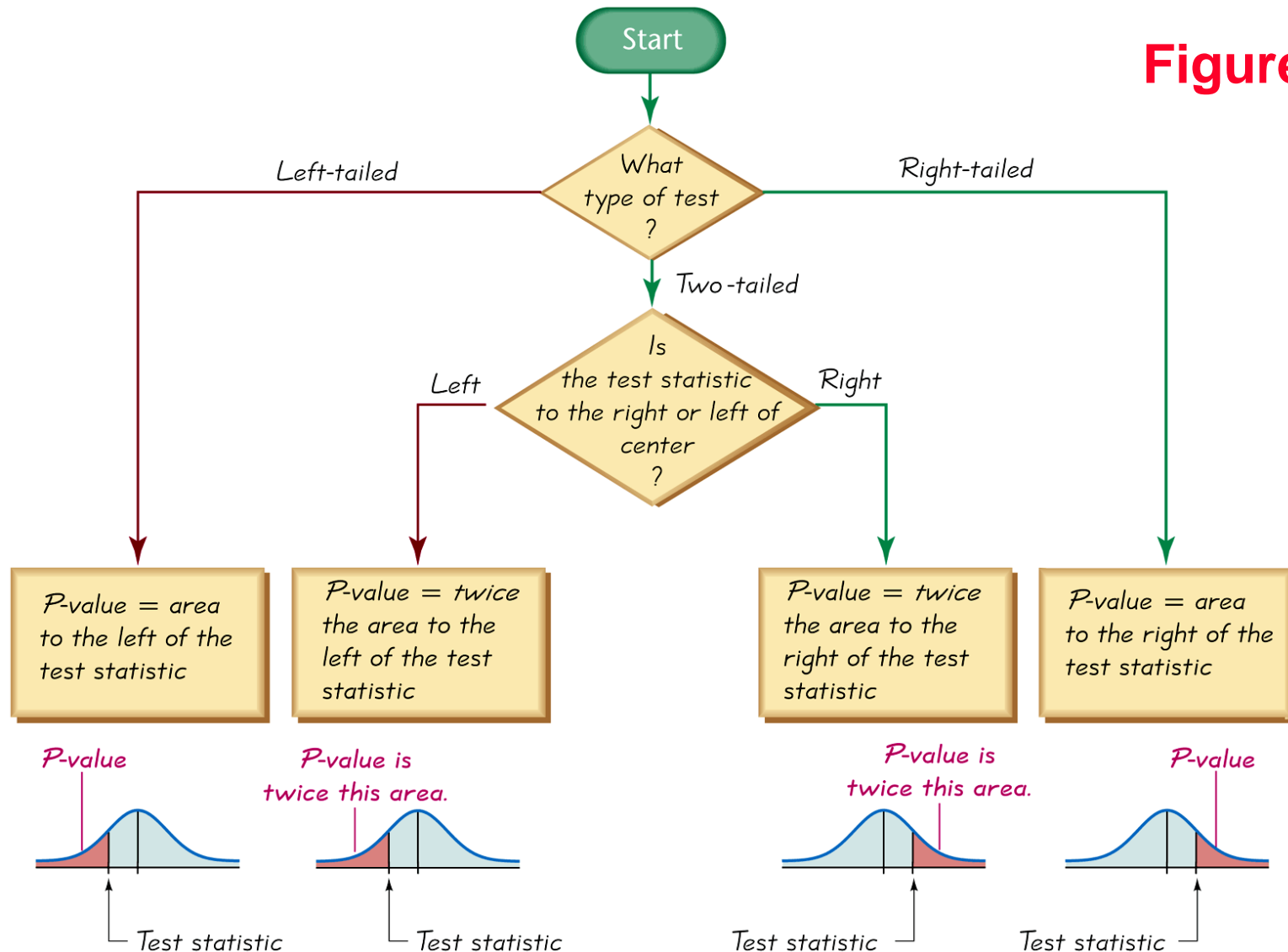
# Decision Criterion - cont

## Confidence Intervals:

**Because a confidence interval estimate of a population parameter contains the likely values of that parameter, reject a claim that the population parameter has a value that is not included in the confidence interval.**

# Procedure for Finding *P*-Values

Figure 8-6



**Example:** Finding  $P$ -values. First determine whether the given conditions result in a right-tailed test, a left-tailed test, or a two-tailed test, then find the  $P$ -values and state a conclusion about the null hypothesis.

- a) A significance level of  $\alpha = 0.05$  is used in testing the claim that  $p > 0.25$ , and the sample data result in a test statistic of  $z = 1.18$ .
- b) A significance level of  $\alpha = 0.05$  is used in testing the claim that  $p \neq 0.25$ , and the sample data result in a test statistic of  $z = 2.34$ .

**Example:** Finding  $P$ -values. First determine whether the given conditions result in a right-tailed test, a left-tailed test, or a two-tailed test, then find the  $P$ -values and state a conclusion about the null hypothesis.

a) With a claim of  $p > 0.25$ , the test is right-tailed. Because the test is right-tailed, Figure 8-6 shows that the  $P$ -value is the area to the right of the test statistic  $z = 1.18$ . We refer to Table A-2 and find that the area to the **right** of  $z = 1.18$  is 0.1190. The  $P$ -value of 0.1190 is greater than the significance level  $\alpha = 0.05$ , so we fail to reject the null hypothesis. The  $P$ -value of 0.1190 is relatively large, indicating that the sample results could easily occur by chance.

**Example:** Finding  $P$ -values. First determine whether the given conditions result in a right-tailed test, a left-tailed test, or a two-tailed test, then find the  $P$ -values and state a conclusion about the null hypothesis.

b) With a claim of  $p \neq 0.25$ , the test is two-tailed. Because the test is two-tailed, and because the test statistic of  $z = 2.34$  is to the right of the center, Figure 8-6 shows that the  $P$ -value is **twice** the area to the right of  $z = 2.34$ . We refer to Table A-2 and find that the area to the right of  $z = 2.34$  is 0.0096, so  $P\text{-value} = 2 \times 0.0096 = 0.0192$ . The  $P$ -value of 0.0192 is less than or equal to the significance level, so we reject the null hypothesis. The small  $P$ -value of 0.0192 shows that the sample results are not likely to occur by chance.

# Wording of Final Conclusion

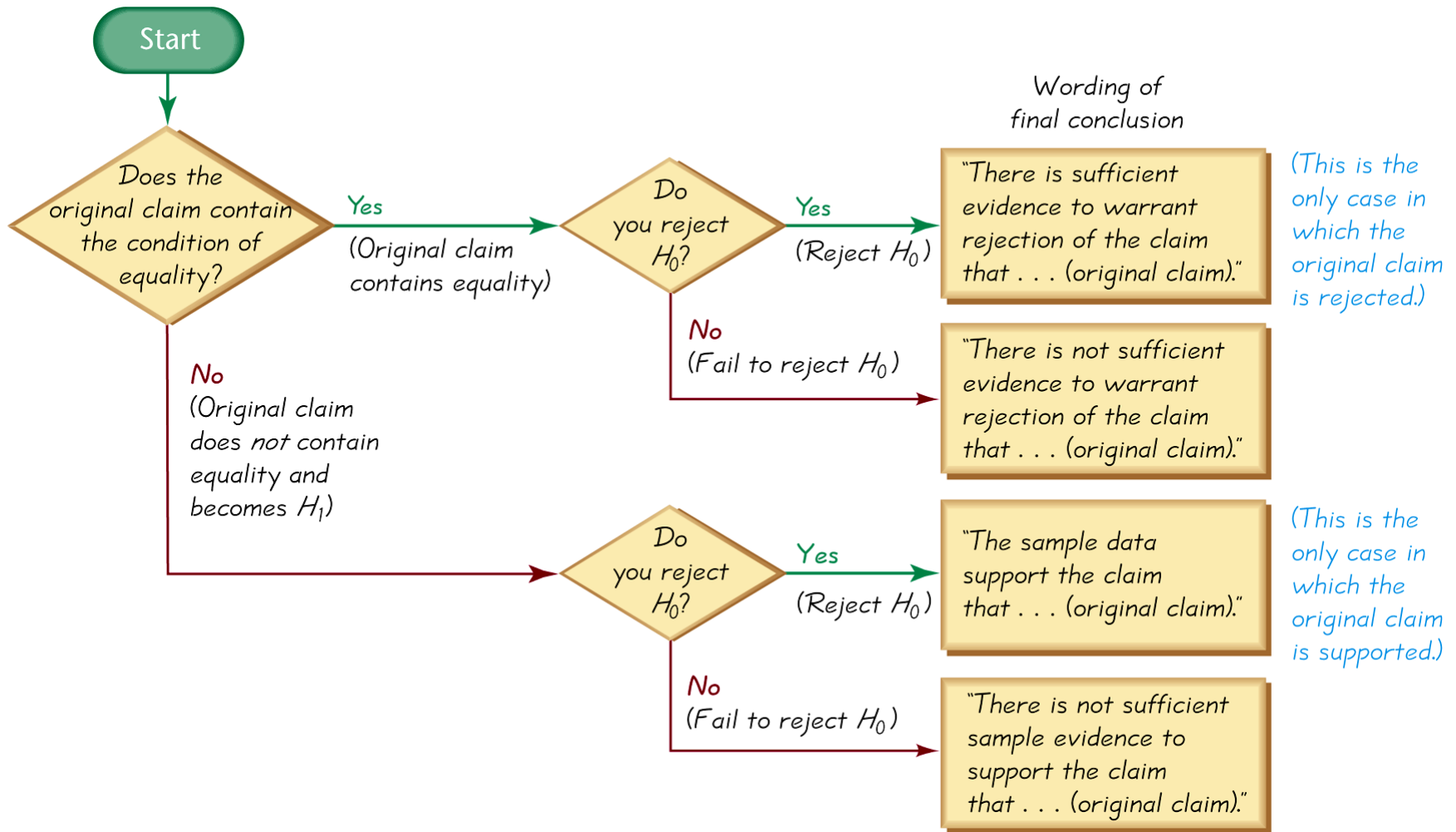


Figure 8-7

# Accept Versus Fail to Reject

- ❖ Some texts use “accept the null hypothesis.”
- ❖ **We are not proving the null hypothesis.**
- ❖ The sample evidence is not strong enough to warrant rejection (such as not enough evidence to convict a suspect).

# Type I Error

- ❖ A **Type I error** is the mistake of rejecting the null hypothesis when it is true.
- ❖ The symbol  $\alpha$  (alpha) is used to represent the probability of a type I error.

# Type II Error

- ❖ A **Type II error** is the mistake of failing to reject the null hypothesis when it is false.
- ❖ The symbol  $\beta$  (beta) is used to represent the probability of a type II error.

**Example:** Assume that we are conducting a hypothesis test of the claim  $p > 0.5$ . Here are the null and alternative hypotheses:  $H_0: p = 0.5$ , and  $H_1: p > 0.5$ .

- a) Identify a type I error.
- b) Identify a type II error.

**Example:** Assume that we are conducting a hypothesis test of the claim  $p > 0.5$ . Here are the null and alternative hypotheses:  $H_0: p = 0.5$ , and  $H_1: p > 0.5$ .

a) A type I error is the mistake of rejecting a true null hypothesis, so this is a type I error: Conclude that there is sufficient evidence to support  $p > 0.5$ , when in reality  $p = 0.5$ .

**Example:** Assume that we are conducting a hypothesis test of the claim  $p > 0.5$ . Here are the null and alternative hypotheses:  $H_0: p = 0.5$ , and  $H_1: p > 0.5$ .

b) A type II error is the mistake of failing to reject the null hypothesis when it is false, so this is a type II error: Fail to reject  $p = 0.5$  (and therefore fail to support  $p > 0.5$ ) when in reality  $p > 0.5$ .

# Type I and Type II Errors

**Table 8-1** Type I and Type II Errors

		True State of Nature	
		The null hypothesis is true	The null hypothesis is false
Decision	We decide to reject the null hypothesis	<b>Type I error</b> (rejecting a true null hypothesis) $\alpha$	Correct decision
	We fail to reject the null hypothesis	Correct decision	<b>Type II error</b> (failing to reject a false null hypothesis) $\beta$

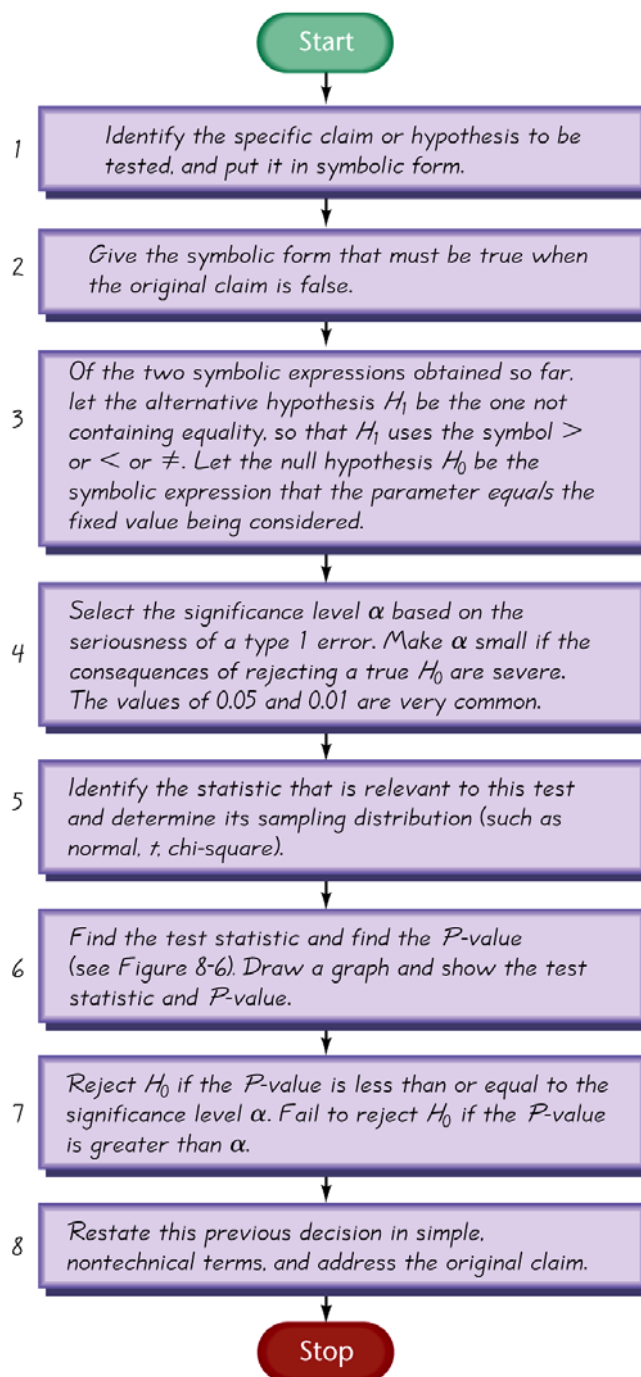
# Controlling Type I and Type II Errors

- ❖ For any fixed  $\alpha$ , an increase in the sample size  $n$  will cause a decrease in  $\beta$ .
- ❖ For any fixed sample size  $n$ , a decrease in  $\alpha$  will cause an increase in  $\beta$ . Conversely, an increase in  $\alpha$  will cause a decrease in  $\beta$ .
- ❖ To decrease both  $\alpha$  and  $\beta$ , increase the sample size.

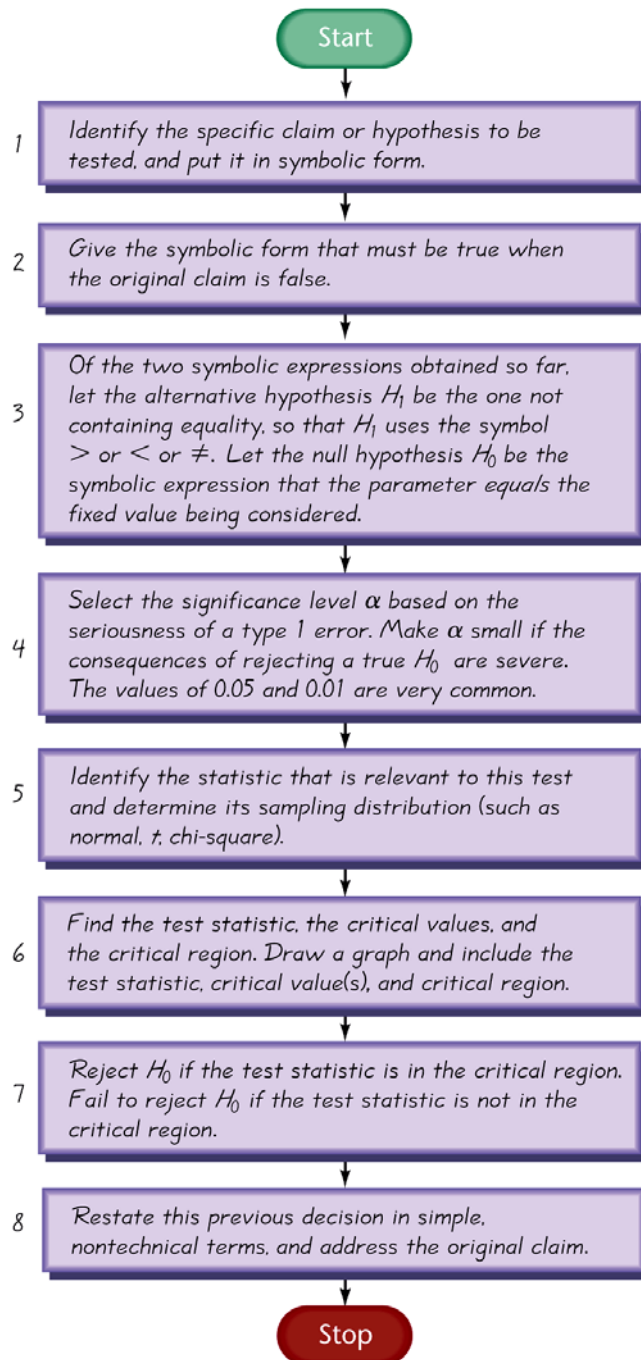
# Definition

The **power of a hypothesis test** is the probability  $(1 - \beta)$  of rejecting a false null hypothesis, which is computed by using a particular significance level  $\alpha$  and a particular value of the population parameter that is an alternative to the value assumed true in the null hypothesis. That is, the power of the hypothesis test is the probability of supporting an alternative hypothesis that is true.

# Comprehensive Hypothesis Test – P-Value Method



# Comprehensive Hypothesis Test – Traditional Method



# Comprehensive Hypothesis Test - cont

A confidence interval estimate of a population parameter contains the likely values of that parameter. We should therefore reject a claim that the population parameter has a value that is not included in the confidence interval.

**Table 8-2** Confidence Level for Confidence Interval

		Two-Tailed Test	One-Tailed Test
Significance	0.01	99%	98%
Level for	0.05	95%	90%
Hypothesis	0.10	90%	80%
Test			

# Comprehensive Hypothesis Test - cont

**Caution:** In some cases, a conclusion based on a confidence interval may be different from a conclusion based on a hypothesis test. See the comments in the individual sections.

# Recap

**In this section we have discussed:**

- ❖ **Null and alternative hypotheses.**
- ❖ **Test statistics.**
- ❖ **Significance levels.**
- ❖  **$P$ -values.**
- ❖ **Decision criteria.**
- ❖ **Type I and II errors.**
- ❖ **Power of a hypothesis test.**



# **Section 8-3**

# **Testing a Claim About a Proportion**

Created by Erin Hodgess, Houston, Texas  
Revised to accompany 10<sup>th</sup> Edition, Tom Wegleitner, Centreville, VA



# Key Concept

**This section presents complete procedures for testing a hypothesis (or claim) made about a population proportion. This section uses the components introduced in the previous section for the  $P$ -value method, the traditional method or the use of confidence intervals.**

# Requirements for Testing Claims About a Population Proportion $p$

- 1) The sample observations are a simple random sample.
- 2) The conditions for a **binomial distribution** are satisfied (Section 5-3).
- 3) The conditions  $np \geq 5$  and  $nq \geq 5$  are satisfied, **so the binomial distribution of sample proportions can be approximated by a normal distribution with  $\mu = np$  and  $\sigma = \sqrt{npq}$ .**

# Notation

**$n$  = number of trials**

**$\hat{p} = \frac{X}{n}$  (sample proportion)**

**$p$  = population proportion (used in the null hypothesis)**

**$q = 1 - p$**

# Test Statistic for Testing a Claim About a Proportion

$$Z = \frac{\hat{p} - p}{\sqrt{\frac{pq}{n}}}$$

# P-Value Method

**Use the same method as described in Section 8-2 and in **Figure 8-8**.**

**Use the standard normal distribution (Table A-2).**

# Traditional Method

**Use the same method as described in Section 8-2 and in Figure 8-9.**

# Confidence Interval Method

**Use the same method as described in Section 8-2 and in Table 8-2.**

**Example:** An article distributed by the Associated Press included these results from a nationwide survey: Of 880 randomly selected drivers, 56% admitted that they run red lights. The claim is that the majority of all Americans run red lights. That is,  $p > 0.5$ . The sample data are  $n = 880$ , and  $\hat{p} = 0.56$ .

$$np = (880)(0.5) = 440 \geq 5$$

$$nq = (880)(0.5) = 440 \geq 5$$

**Example:** An article distributed by the Associated Press included these results from a nationwide survey: Of 880 randomly selected drivers, 56% admitted that they run red lights. The claim is that the majority of all Americans run red lights. That is,  $p > 0.5$ . The sample data are  $n = 880$ , and  $\hat{p} = 0.56$ . We will use the **P-value Method**.

$$H_0: p = 0.5$$

$$H_1: p > 0.5$$

$$\alpha = 0.05$$

$$z = \frac{\hat{p} - p}{\sqrt{\frac{pq}{n}}} = \frac{0.56 - 0.5}{\sqrt{\frac{(0.5)(0.5)}{880}}} = 3.56$$

Referring to Table A-2, we see that for values of  $z = 3.50$  and higher, we use 0.9999 for the cumulative area to the left of the test statistic. The  $P$ -value is  $1 - 0.9999 = 0.0001$ .

**Example:** An article distributed by the Associated Press included these results from a nationwide survey: Of 880 randomly selected drivers, 56% admitted that they run red lights. The claim is that the majority of all Americans run red lights. That is,  $p > 0.5$ . The sample data are  $n = 880$ , and  $\hat{p} = 0.56$ . We will use the **P-value Method**.

$$H_0: p = 0.5$$

$$H_1: p > 0.5$$

$$\alpha = 0.05$$

$$z = \frac{\hat{p} - p}{\sqrt{\frac{pq}{n}}} = \frac{0.56 - 0.5}{\sqrt{\frac{(0.5)(0.5)}{880}}} = 3.56$$

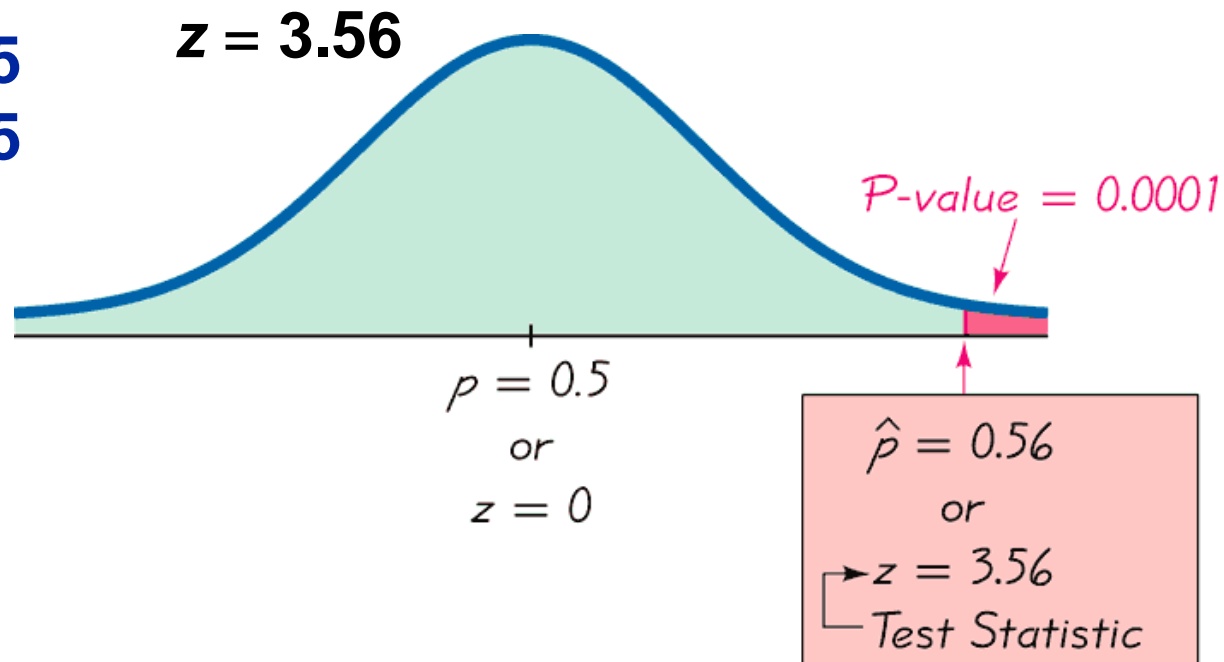
Since the **P-value** of 0.0001 is less than the significance level of  $\alpha = 0.05$ , we reject the null hypothesis. There is sufficient evidence to support the claim.

**Example:** An article distributed by the Associated Press included these results from a nationwide survey: Of 880 randomly selected drivers, 56% admitted that they run red lights. The claim is that the majority of all Americans run red lights. That is,  $p > 0.5$ . The sample data are  $n = 880$ , and  $\hat{p} = 0.56$ . We will use the **P-value Method**.

$$H_0: p = 0.5$$

$$H_1: p > 0.5$$

$$\alpha = 0.05$$



**Example:** An article distributed by the Associated Press included these results from a nationwide survey: Of 880 randomly selected drivers, 56% admitted that they run red lights. The claim is that the majority of all Americans run red lights. That is,  $p > 0.5$ . The sample data are  $n = 880$ , and  $\hat{p} = 0.56$ . We will use the **Traditional Method**.

$$\begin{array}{l} H_0: p = 0.5 \\ H_1: p > 0.5 \\ \alpha = 0.05 \end{array} \quad z = \frac{\hat{p} - p}{\sqrt{\frac{pq}{n}}} = \frac{0.56 - 0.5}{\sqrt{\frac{(0.5)(0.5)}{880}}} = 3.56$$

This is a right-tailed test, so the critical region is an area of 0.05. We find that  $z = 1.645$  is the critical value of the critical region. We reject the null hypothesis. There is sufficient evidence to support the claim.

**Example:** An article distributed by the Associated Press included these results from a nationwide survey: Of 880 randomly selected drivers, 56% admitted that they run red lights. The claim is that the majority of all Americans run red lights. That is,  $p > 0.5$ . The sample data are  $n = 880$ , and  $\hat{p} = 0.56$ . We will use the **confidence interval method**.

For a one-tailed hypothesis test with significance level  $\alpha$ , we will construct a confidence interval with a confidence level of  $1 - 2\alpha$ . We construct a 90% confidence interval. We obtain  $0.533 < p < 0.588$ . We are 90% confident that the true value of  $p$  is contained within the limits of 0.533 and 0.588. Thus we support the claim that  $p > 0.5$ .

# CAUTION

When testing claims about a population proportion, the traditional method and the  $P$ -value method are equivalent and will yield the same result since they use the same standard deviation based on the **claimed proportion  $p$** . However, the confidence interval uses an estimated standard deviation based upon the **sample proportion  $\hat{p}$** . Consequently, it is possible that the traditional and  $P$ -value methods may yield a different conclusion than the confidence interval method.

A good strategy is to use a confidence interval to estimate a population proportion, but use the  $P$ -value or traditional method for testing a hypothesis.

# Obtaining $\hat{P}$

$\hat{p}$  sometimes is given directly

“10% of the observed sports cars are red”  
is expressed as

$$\hat{p} = 0.10$$

$\hat{p}$  sometimes must be calculated

“96 surveyed households have cable TV  
and 54 do not” is calculated using

$$\hat{p} = \frac{x}{n} = \frac{96}{(96+54)} = 0.64$$

(determining the sample proportion of households with cable TV)

**Example:** When Gregory Mendel conducted his famous hybridization experiments with peas, one such experiment resulted in offspring consisting of 428 peas with green pods and 152 peas with yellow pods. According to Mendel's theory,  $1/4$  of the offspring peas should have yellow pods. Use a 0.05 significance level with the  $P$ -value method to test the claim that the proportion of peas with yellow pods is equal to  $1/4$ .

We note that  $n = 428 + 152 = 580$ ,  
so  $\hat{p} = 0.262$ , and  $p = 0.25$ .

**Example:** When Gregory Mendel conducted his famous hybridization experiments with peas, one such experiment resulted in offspring consisting of 428 peas with green pods and 152 peas with yellow pods. According to Mendel's theory, 1/4 of the offspring peas should have yellow pods. Use a 0.05 significance level with the *P*-value method to test the claim that the proportion of peas with yellow pods is equal to 1/4.

$$\begin{array}{l}
 H_0: p = 0.25 \\
 H_1: p \neq 0.25 \\
 n = 580 \\
 \alpha = 0.05 \\
 \hat{p} = 0.262
 \end{array}
 \quad
 z = \frac{\hat{p} - p}{\sqrt{\frac{pq}{n}}} = \frac{0.262 - 0.25}{\sqrt{\frac{(0.25)(0.75)}{580}}} = 0.67$$

Since this is a two-tailed test, the *P*-value is twice the area to the right of the test statistic. Using Table A-2,  $z = 0.67$  is  $1 - 0.7486 = 0.2514$ .

**Example:** When Gregory Mendel conducted his famous hybridization experiments with peas, one such experiment resulted in offspring consisting of 428 peas with green pods and 152 peas with yellow pods. According to Mendel's theory,  $1/4$  of the offspring peas should have yellow pods. Use a 0.05 significance level with the  $P$ -value method to test the claim that the proportion of peas with yellow pods is equal to  $1/4$ .

$$H_0: p = 0.25$$

$$H_1: p \neq 0.25$$

$$n = 580$$

$$\alpha = 0.05$$

$$\hat{p} = 0.262$$


$$z = \frac{\hat{p} - p}{\sqrt{\frac{pq}{n}}} = \frac{0.262 - 0.25}{\sqrt{\frac{(0.25)(0.75)}{580}}} = 0.67$$

The  $P$ -value is  $2(0.2514) = 0.5028$ . We fail to reject the null hypothesis. There is not sufficient evidence to warrant rejection of the claim that  $1/4$  of the peas have yellow pods.

# Recap

**In this section we have discussed:**

- ❖ **Test statistics for claims about a proportion.**
- ❖ ***P*-value method.**
- ❖ **Confidence interval method.**
- ❖ **Obtaining  $\hat{p}$ .**



# **Section 8-4**

## **Testing a Claim About a Mean: $\sigma$ Known**

Created by Erin Hodgess, Houston, Texas  
Revised to accompany 10<sup>th</sup> Edition, Tom Wegleitner, Centreville, VA



# Key Concept

**This section presents methods for testing a claim about a population mean, given that the population standard deviation is a known value. This section uses the normal distribution with the same components of hypothesis tests that were introduced in Section 8-2.**

# Requirements for Testing Claims About a Population Mean (with $\sigma$ Known)

- 1) The sample is a simple random sample.
- 2) The value of the population standard deviation  $\sigma$  is known.
- 3) Either or both of these conditions is satisfied: The population is normally distributed or  $n > 30$ .

# Test Statistic for Testing a Claim About a Mean (with $\sigma$ Known)

$$Z = \frac{\bar{X} - \mu_{\bar{X}}}{\frac{\sigma}{\sqrt{n}}}$$

**Example:** We have a sample of 106 body temperatures having a mean of 98.20°F. Assume that the sample is a simple random sample and that the population standard deviation  $\sigma$  is known to be 0.62°F. Use a 0.05 significance level to test the common belief that the mean body temperature of healthy adults is equal to 98.6°F. Use the *P*-value method.

$$H_0: \mu = 98.6$$

$$H_1: \mu \neq 98.6$$

$$\alpha = 0.05$$

$$\bar{x} = 98.2$$

$$\sigma = 0.62$$

$$z = \frac{\bar{X} - \mu_{\bar{X}}}{\frac{\sigma}{\sqrt{n}}} = \frac{98.2 - 98.6}{\frac{0.62}{\sqrt{106}}} = -6.64$$

This is a two-tailed test and the test statistic is to the left of the center, so the *P*-value is twice the area to the left of  $z = -6.64$ . We refer to Table A-2 to find the area to the left of  $z = -6.64$  is 0.0001, so the *P*-value is  $2(0.0001) = 0.0002$ .

**Example:** We have a sample of 106 body temperatures having a mean of  $98.20^{\circ}\text{F}$ . Assume that the sample is a simple random sample and that the population standard deviation  $\sigma$  is known to be  $0.62^{\circ}\text{F}$ . Use a 0.05 significance level to test the common belief that the mean body temperature of healthy adults is equal to  $98.6^{\circ}\text{F}$ . Use the  $P$ -value method.

$$H_0: \mu = 98.6$$

$$H_1: \mu \neq 98.6$$

$$\alpha = 0.05$$

$$\bar{x} = 98.2$$

$$\sigma = 0.62$$

Because the test is two-tailed, the  $P$ -value is twice the red-shaded area.

Area = 0.0001

Sample data:  $\bar{x} = 98.20$   
or  
 $z = -6.64$

$$z = -6.64$$

$$\mu = 98.6$$

or

$$z = 0$$

**Example:** We have a sample of 106 body temperatures having a mean of 98.20°F. Assume that the sample is a simple random sample and that the population standard deviation  $\sigma$  is known to be 0.62°F. Use a 0.05 significance level to test the common belief that the mean body temperature of healthy adults is equal to 98.6°F. Use the  $P$ -value method.

$$H_0: \mu = 98.6$$

$$z = -6.64$$

$$H_1: \mu \neq 98.6$$

$$\alpha = 0.05$$

$$\bar{x} = 98.2$$

$$\sigma = 0.62$$

Because the  $P$ -value of 0.0002 is less than the significance level of  $\alpha = 0.05$ , we reject the null hypothesis. There is sufficient evidence to conclude that the mean body temperature of healthy adults differs from 98.6°F.

**Example:** We have a sample of 106 body temperatures having a mean of 98.20°F. Assume that the sample is a simple random sample and that the population standard deviation  $\sigma$  is known to be 0.62°F. Use a 0.05 significance level to test the common belief that the mean body temperature of healthy adults is equal to 98.6°F. Use the traditional method.

$$H_0: \mu = 98.6$$

$$H_1: \mu \neq 98.6$$

$$\alpha = 0.05$$

$$\bar{x} = 98.2$$

$$\sigma = 0.62$$

$$z = -6.64$$

We now find the critical values to be  $z = -1.96$  and  $z = 1.96$ . We would reject the null hypothesis, since the test statistic of  $z = -6.64$  would fall in the critical region.

There is sufficient evidence to conclude that the mean body temperature of healthy adults differs from 98.6°F.

**Example:** We have a sample of 106 body temperatures having a mean of 98.20°F. Assume that the sample is a simple random sample and that the population standard deviation  $\sigma$  is known to be 0.62°F. Use a 0.05 significance level to test the common belief that the mean body temperature of healthy adults is equal to 98.6°F. Use the confidence interval method.

$$H_0: \mu = 98.6$$

$$H_1: \mu \neq 98.6$$

$$\alpha = 0.05$$

$$\bar{x} = 98.2$$

$$\sigma = 0.62$$

For a two-tailed hypothesis test with a 0.05 significance level, we construct a 95% confidence interval. Use the methods of Section 7-2 to construct a 95% confidence interval:

$$98.08 < \mu < 98.32$$

**We are 95% confident that the limits of 98.08 and 98.32 contain the true value of  $\mu$ , so it appears that 98.6 cannot be the true value of  $\mu$ .**

# Underlying Rationale of Hypothesis Testing

- ❖ If, under a given assumption, there is an extremely small probability of getting sample results at least as extreme as the results that were obtained, we conclude that the assumption is probably not correct.
- ❖ When testing a claim, we make an assumption (null hypothesis) of equality. We then compare the assumption and the sample results and we form one of the following conclusions:

# Underlying Rationale of Hypotheses Testing - cont

- ❖ If the sample results (or more extreme results) can easily occur when the assumption (null hypothesis) is true, we attribute the relatively small discrepancy between the assumption and the sample results to chance.
- ❖ If the sample results cannot easily occur when that assumption (null hypothesis) is true, we explain the relatively large discrepancy between the assumption and the sample results by concluding that the assumption is not true, so we reject the assumption.

# Recap

**In this section we have discussed:**

- ❖ **Requirements for testing claims about population means,  $\sigma$  known.**
- ❖  **$P$ -value method.**
- ❖ **Traditional method.**
- ❖ **Confidence interval method.**
- ❖ **Rationale for hypothesis testing.**



# **Section 8-5**

## **Testing a Claim About a Mean: $\sigma$ Not Known**

Created by Erin Hodgess, Houston, Texas  
Revised to accompany 10<sup>th</sup> Edition, Tom Wegleitner, Centreville, VA



# Key Concept

**This section presents methods for testing a claim about a population mean when we do not know the value of  $\sigma$ . The methods of this section use the Student  $t$  distribution introduced earlier.**

# Requirements for Testing Claims About a Population Mean (with $\sigma$ Not Known)

- 1) The sample is a simple random sample.
- 2) The value of the population standard deviation  $\sigma$  is **not** known.
- 3) Either or both of these conditions is satisfied: The population is normally distributed or  $n > 30$ .

# Test Statistic for Testing a Claim About a Mean (with $\sigma$ Not Known)

$$t = \frac{\bar{X} - \mu_{\bar{X}}}{\frac{s}{\sqrt{n}}}$$

## **P-values and Critical Values**

- ❖ Found in Table A-3
- ❖ Degrees of freedom (df) =  $n - 1$

# Important Properties of the Student $t$ Distribution

1. The Student  $t$  distribution is different for different sample sizes (see Figure 7-5 in Section 7-4).
2. The Student  $t$  distribution has the same general bell shape as the normal distribution; its wider shape reflects the greater variability that is expected when  $s$  is used to estimate  $\sigma$ .
3. The Student  $t$  distribution has a mean of  $t = 0$  (just as the standard normal distribution has a mean of  $z = 0$ ).
4. The standard deviation of the Student  $t$  distribution varies with the sample size and is greater than 1 (unlike the standard normal distribution, which has  $\sigma = 1$ ).
5. As the sample size  $n$  gets larger, the Student  $t$  distribution gets closer to the standard normal distribution.

# Choosing between the Normal and Student $t$ Distributions when Testing a Claim about a Population Mean $\mu$

**Use the Student  $t$  distribution when  $\sigma$  is not known and either or both of these conditions is satisfied: The population is normally distributed or  $n > 30$ .**

**Example:** Data Set 13 in Appendix B of the text includes weights of 13 red M&M candies randomly selected from a bag containing 465 M&Ms. The weights (in grams) have a mean  $\bar{x} = 0.8635$  and a standard deviation  $s = 0.0576$  g. The bag states that the net weight of the contents is 396.9 g, so the M&Ms must have a mean weight that is  $396.9/465 = 0.8535$  g in order to provide the amount claimed. Use the sample data with a 0.05 significance level to test the claim of a production manager that the M&Ms have a mean that is actually greater than 0.8535 g. Use the traditional method.

The sample is a simple random sample and we are not using a known value of  $\sigma$ . The sample size is  $n = 13$  and a normal quartile plot suggests the weights are normally distributed.

**Example:** Data Set 13 in Appendix B of the text includes weights of 13 red M&M candies randomly selected from a bag containing 465 M&Ms. The weights (in grams) have a mean  $\bar{x} = 0.8635$  and a standard deviation  $s = 0.0576$  g. The bag states that the net weight of the contents is 396.9 g, so the M&Ms must have a mean weight that is  $396.9/465 = 0.8535$  g in order to provide the amount claimed. Use the sample data with a 0.05 significance level to test the claim of a production manager that the M&Ms have a mean that is actually greater than 0.8535 g. Use the traditional method.

$$H_0: \mu = 0.8535$$

$$H_1: \mu > 0.8535$$

$$\alpha = 0.05$$

$$\bar{x} = 0.8635$$

$$s = 0.0576$$

$$n = 13$$

$$t = \frac{\frac{\bar{x} - \mu_{\bar{x}}}{s}}{\sqrt{\frac{n}{n}}} = \frac{0.8635 - 0.8535}{\frac{0.0576}{\sqrt{13}}} = 0.626$$

**The critical value, from Table A-3, is  $t = 1.782$**

**Example:** Data Set 13 in Appendix B of the text includes weights of 13 red M&M candies randomly selected from a bag containing 465 M&Ms. The weights (in grams) have a mean  $\bar{x} = 0.8635$  and a standard deviation  $s = 0.0576$  g. The bag states that the net weight of the contents is 396.9 g, so the M&Ms must have a mean weight that is  $396.9/465 = 0.8535$  g in order to provide the amount claimed. Use the sample data with a 0.05 significance level to test the claim of a production manager that the M&Ms have a mean that is actually greater than 0.8535 g. Use the traditional method.

$$H_0: \mu = 0.8535$$

$$H_1: \mu > 0.8535 \quad t = 0.626 \quad \text{Critical Value } t = 1.782$$

$$\alpha = 0.05$$

$$\bar{x} = 0.8635$$

$$s = 0.0576$$

$$n = 13$$

**Because the test statistic of  $t = 0.626$  does not fall in the critical region, we fail to reject  $H_0$ . There is not sufficient evidence to support the claim that the mean weight of the M&Ms is greater than 0.8535 g.**

# Normal Distribution Versus Student $t$ Distribution

The critical value in the preceding example was  $t = 1.782$ , but if the normal distribution were being used, the critical value would have been  $z = 1.645$ .

The Student  $t$  critical value is larger (farther to the right), showing that with the Student  $t$  distribution, the sample evidence must be **more extreme** before we can consider it to be significant.

# ***P*-Value Method**

- ❖ **Use software or a TI-83/84 Plus calculator.**
- ❖ **If technology is not available, use Table A-3 to identify a range of *P*-values.**

**Example:** Assuming that neither software nor a TI-83 Plus calculator is available, use Table A-3 to find a range of values for the *P*-value corresponding to the given results.

- a) In a left-tailed hypothesis test, the sample size is  $n = 12$ , and the test statistic is  $t = -2.007$ .
- b) In a right-tailed hypothesis test, the sample size is  $n = 12$ , and the test statistic is  $t = 1.222$ .
- c) In a two-tailed hypothesis test, the sample size is  $n = 12$ , and the test statistic is  $t = -3.456$ .

**Example:** Assuming that neither software nor a TI-83 Plus calculator is available, use Table A-3 to find a range of values for the *P*-value corresponding to the given results.

**Table A-3** Finding *P*-Values from Table A-3

	Area in One Tail				
	0.005	0.01	0.025	0.05	0.10
Degrees of Freedom	Area in Two Tails				
	0.01	0.02	0.05	0.10	0.20
• • • 11	3.106	2.718	2.201	1.796	1.363
	• •				

**Example:** Assuming that neither software nor a TI-83 Plus calculator is available, use Table A-3 to find a range of values for the  $P$ -value corresponding to the given results.

- a) The test is a left-tailed test with test statistic  $t = -2.007$ , so the  $P$ -value is the area to the left of  $-2.007$ . Because of the symmetry of the  $t$  distribution, that is the same as the area to the right of  $+2.007$ . Any test statistic between 2.201 and 1.796 has a right-tailed  $P$ -value that is between 0.025 and 0.05. We conclude that  $0.025 < P\text{-value} < 0.05$ .

**Example:** Assuming that neither software nor a TI-83 Plus calculator is available, use Table A-3 to find a range of values for the  $P$ -value corresponding to the given results.

**b) The test is a right-tailed test with test statistic  $t = 1.222$ , so the  $P$ -value is the area to the right of 1.222. Any test statistic less than 1.363 has a right-tailed  $P$ -value that is greater than 0.10. We conclude that  $P\text{-value} > 0.10$ .**


**Example:** Assuming that neither software nor a TI-83 Plus calculator is available, use Table A-3 to find a range of values for the  $P$ -value corresponding to the given results.

c) The test is a two-tailed test with test statistic  $t = -3.456$ . The  $P$ -value is twice the area to the right of  $-3.456$ . Any test statistic greater than 3.106 has a two-tailed  $P$ -value that is less than 0.01. We conclude that  $P\text{-value} < 0.01$ .

# Recap

**In this section we have discussed:**

- ❖ **Assumptions for testing claims about population means,  $\sigma$  unknown.**
- ❖ **Student  $t$  distribution.**
- ❖  **$P$ -value method.**



# **Section 8-6**

## **Testing a Claim About a Standard Deviation or Variance**

Created by Erin Hodgess, Houston, Texas  
Revised to accompany 10<sup>th</sup> Edition, Tom Wegleitner, Centreville, VA



# Key Concept

**This section introduces methods for testing a claim made about a population standard deviation  $\sigma$  or population variance  $\sigma^2$ . The methods of this section use the chi-square distribution that was first introduced in Section 7-5.**

# Requirements for Testing Claims About $\sigma$ or $\sigma^2$

1. The sample is a simple random sample.
2. The population has a normal distribution. (This is a much stricter requirement than the requirement of a normal distribution when testing claims about means.)

# Chi-Square Distribution

## Test Statistic

$$\chi^2 = \frac{(n - 1) s^2}{\sigma^2}$$

**$n$  = sample size**

**$s^2$  = sample variance**

**$\sigma^2$  = population variance  
(given in null hypothesis)**

# ***P*-Values and Critical Values for Chi-Square Distribution**

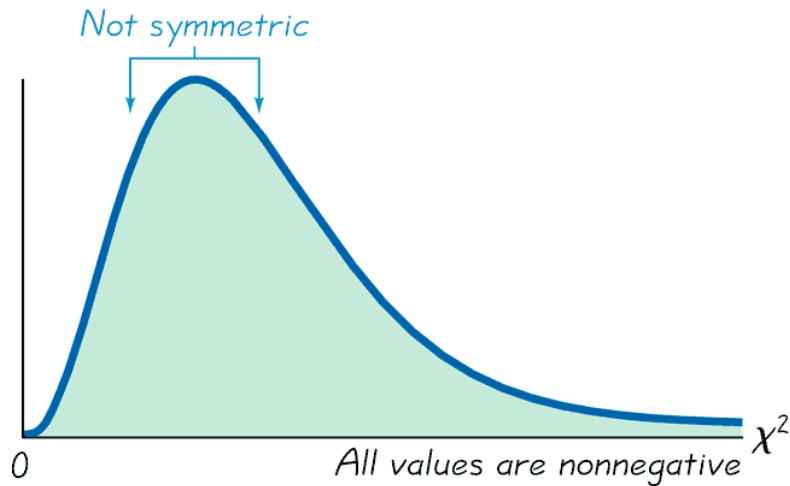
- ❖ **Use Table A-4.**
- ❖ **The degrees of freedom =  $n - 1$ .**

# Properties of Chi-Square Distribution

- ❖ All values of  $\chi^2$  are nonnegative, and the distribution is not symmetric (see Figure 8-13, following).
- ❖ There is a different distribution for each number of degrees of freedom (see Figure 8-14, following).
- ❖ The critical values are found in Table A-4 using  $n - 1$  degrees of freedom.

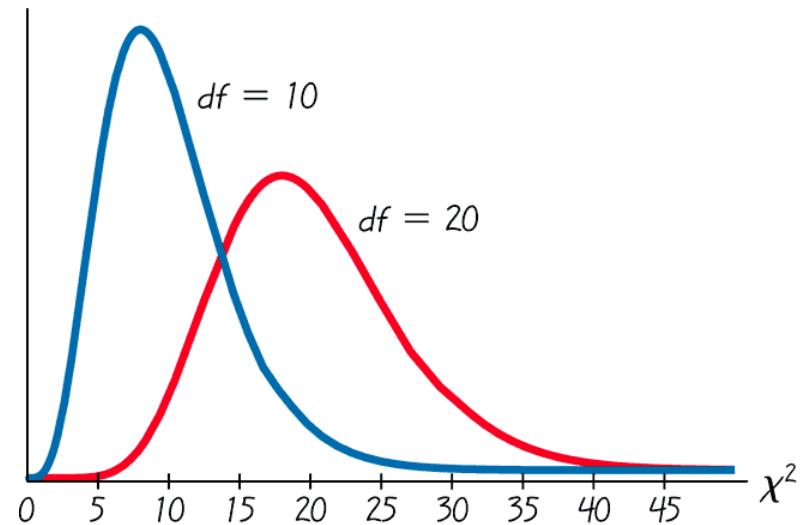
# Properties of Chi-Square Distribution - cont

## Properties of the Chi-Square Distribution



**Figure 8-13**

## Chi-Square Distribution for 10 and 20 Degrees of Freedom



**There is a different distribution for each number of degrees of freedom.**

**Figure 8-14**

**Example:** For a simple random sample of adults, IQ scores are normally distributed with a mean of 100 and a standard deviation of 15. A simple random sample of 13 statistics professors yields a standard deviation of  $s = 7.2$ . Assume that IQ scores of statistics professors are normally distributed and use a 0.05 significance level to test the claim that  $\sigma = 15$ .

$$H_0: \sigma = 15$$

$$H_1: \sigma \neq 15$$

$$\alpha = 0.05$$

$$n = 13$$

$$s = 7.2$$

$$\chi^2 = \frac{(n - 1)s^2}{\sigma^2} = \frac{(13 - 1)(7.2)^2}{15^2} = 2.765$$

**Example:** For a simple random sample of adults, IQ scores are normally distributed with a mean of 100 and a standard deviation of 15. A simple random sample of 13 statistics professors yields a standard deviation of  $s = 7.2$ . Assume that IQ scores of statistics professors are normally distributed and use a 0.05 significance level to test the claim that  $\sigma = 15$ .

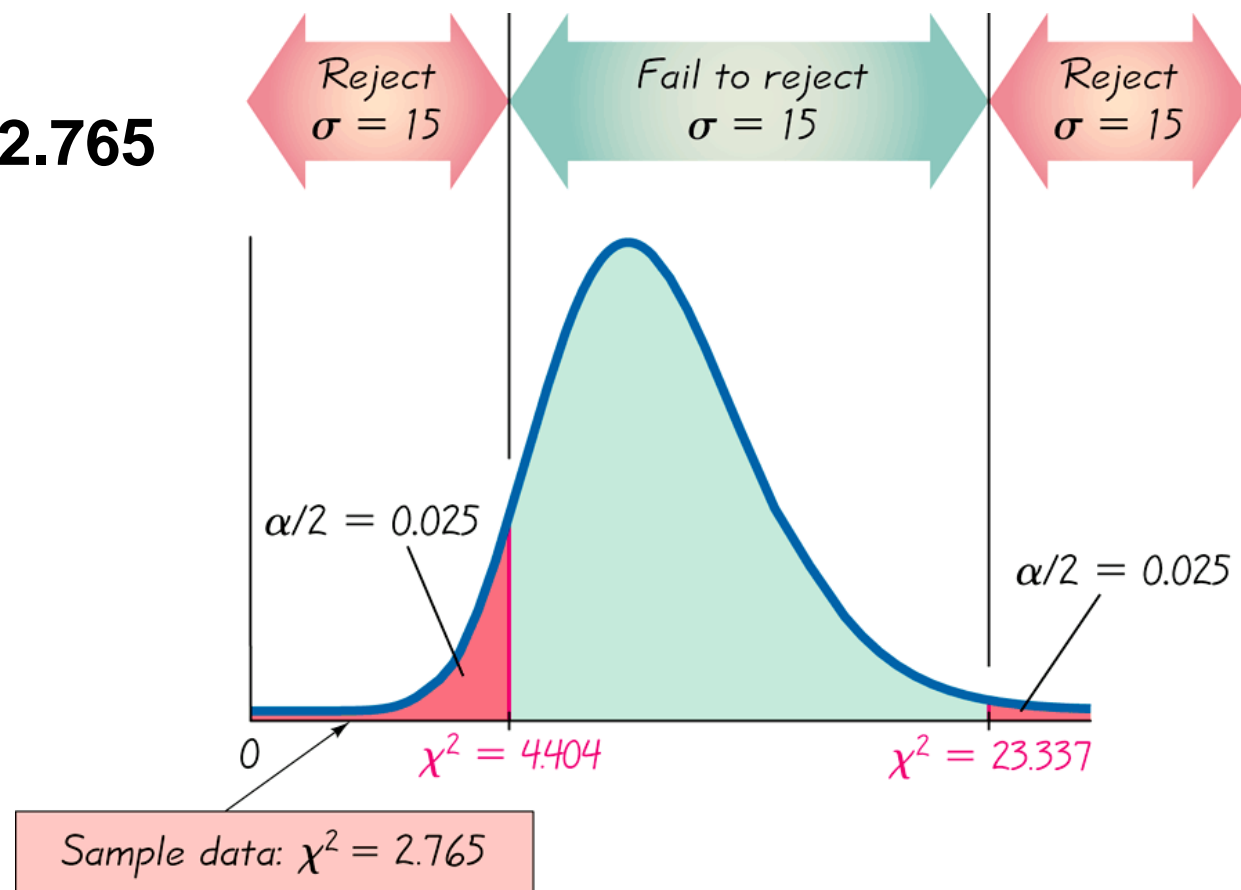
$$H_0: \sigma = 15$$

$$H_1: \sigma \neq 15 \quad \chi^2 = 2.765$$

$$\alpha = 0.05$$

$$n = 13$$

$$s = 7.2$$



**Example:** For a simple random sample of adults, IQ scores are normally distributed with a mean of 100 and a standard deviation of 15. A simple random sample of 13 statistics professors yields a standard deviation of  $s = 7.2$ . Assume that IQ scores of statistics professors are normally distributed and use a 0.05 significance level to test the claim that  $\sigma = 15$ .

$$H_0: \sigma = 15$$

$$H_1: \sigma \neq 15$$

$$\alpha = 0.05$$

$$n = 13$$

$$s = 7.2$$

$$\chi^2 = 2.765$$

The critical values of 4.404 and 23.337 are found in Table A-4, in the 12th row (degrees of freedom =  $n - 1$ ) in the column corresponding to 0.975 and 0.025.

**Example:** For a simple random sample of adults, IQ scores are normally distributed with a mean of 100 and a standard deviation of 15. A simple random sample of 13 statistics professors yields a standard deviation of  $s = 7.2$ . Assume that IQ scores of statistics professors are normally distributed and use a 0.05 significance level to test the claim that  $\sigma = 15$ .

$$H_0: \sigma = 15$$

$$H_1: \sigma \neq 15$$

$$\alpha = 0.05$$

$$n = 13$$

$$s = 7.2$$

$$\chi^2 = 2.765$$

**Because the test statistic is in the critical region, we reject the null hypothesis. There is sufficient evidence to warrant rejection of the claim that the standard deviation is equal to 15.**

# Recap

**In this section we have discussed:**

- ❖ **Tests for claims about standard deviation and variance.**
- ❖ **Test statistic.**
- ❖ **Chi-square distribution.**
- ❖ **Critical values.**